

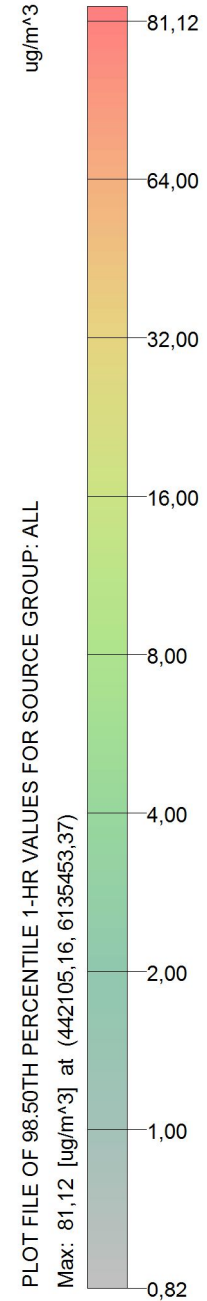
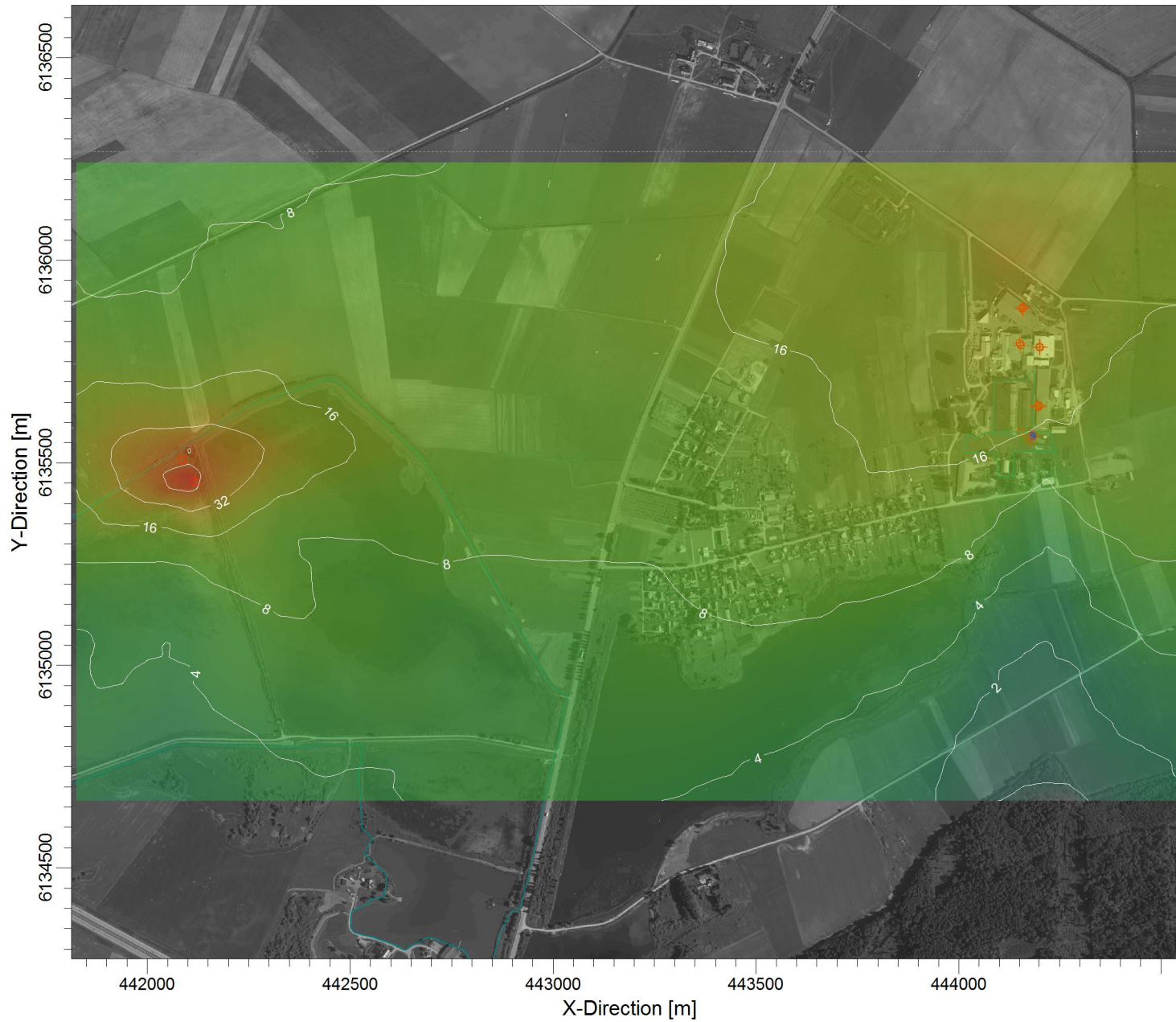
PROJECT TITLE:

Amoniakas

1 valandos vidurkio koncentracijos įvertinus foninę taršą

COMMENTS:

Ribinė vertė - 200 ug/m³



SOURCES:

18

RECEPTORS:

840

OUTPUT TYPE:

Concentration

MAX:

81,12 ug/m³

SCALE:

1:15.000



PROJECT NO.:

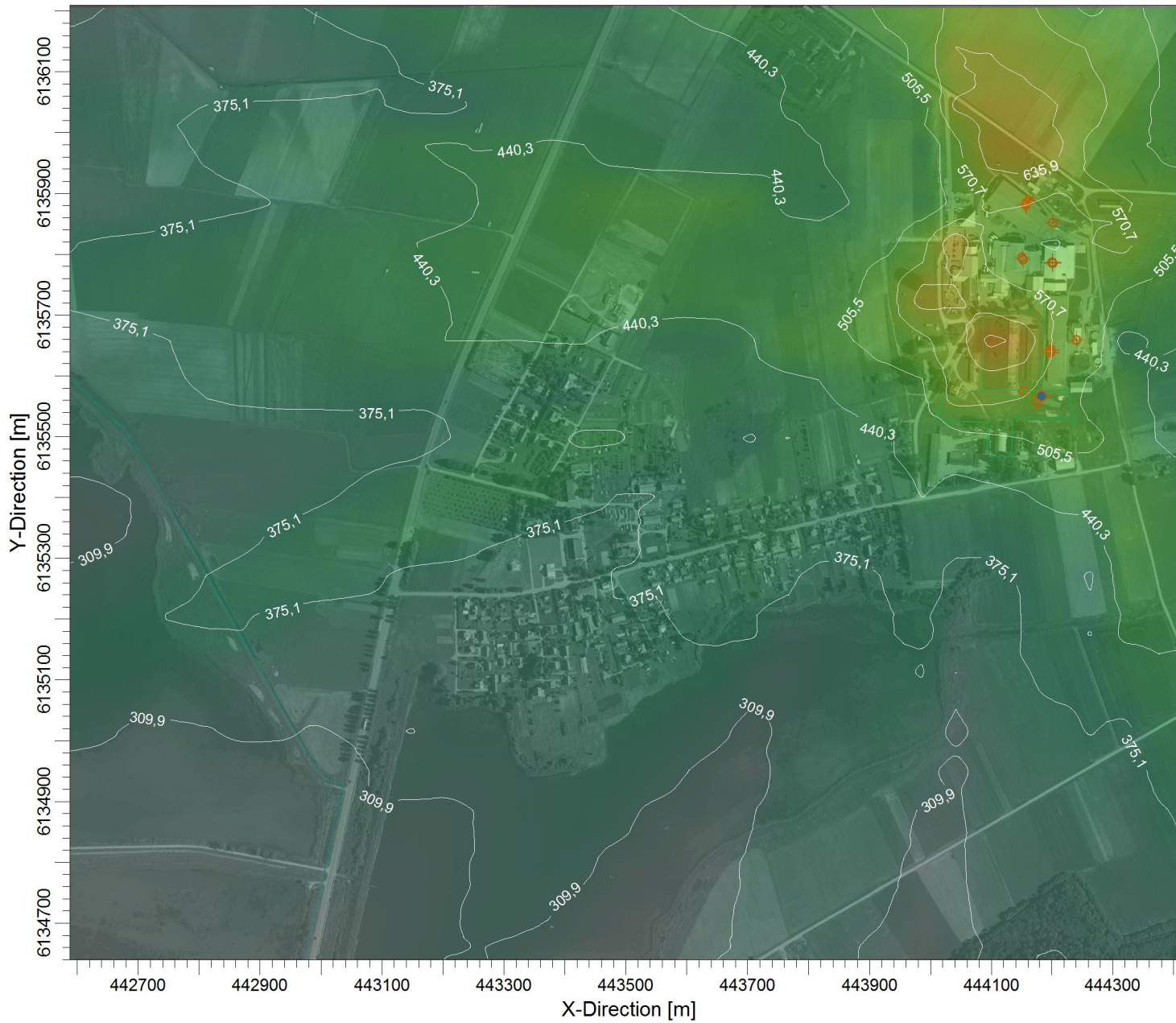
PROJECT TITLE:

Anglies monoksidas (CO)

8 valandų vidurkio koncentracijos įvertinus foninę taršą

COMMENTS:

Ribinė vertė - 10000 ug/m³



ug/m³

PLOT FILE OF HIGH 1ST HIGH 8-HR VALUES FOR SOURCE GROUP: ALL
Max: 831,5 [ug/m³] at (444122,73, 6135653,67)



SOURCES:

21

RECEPTORS:

840

OUTPUT TYPE:

Concentration

MAX:

831,5 ug/m³

SCALE:

1:10.000



PROJECT NO.:

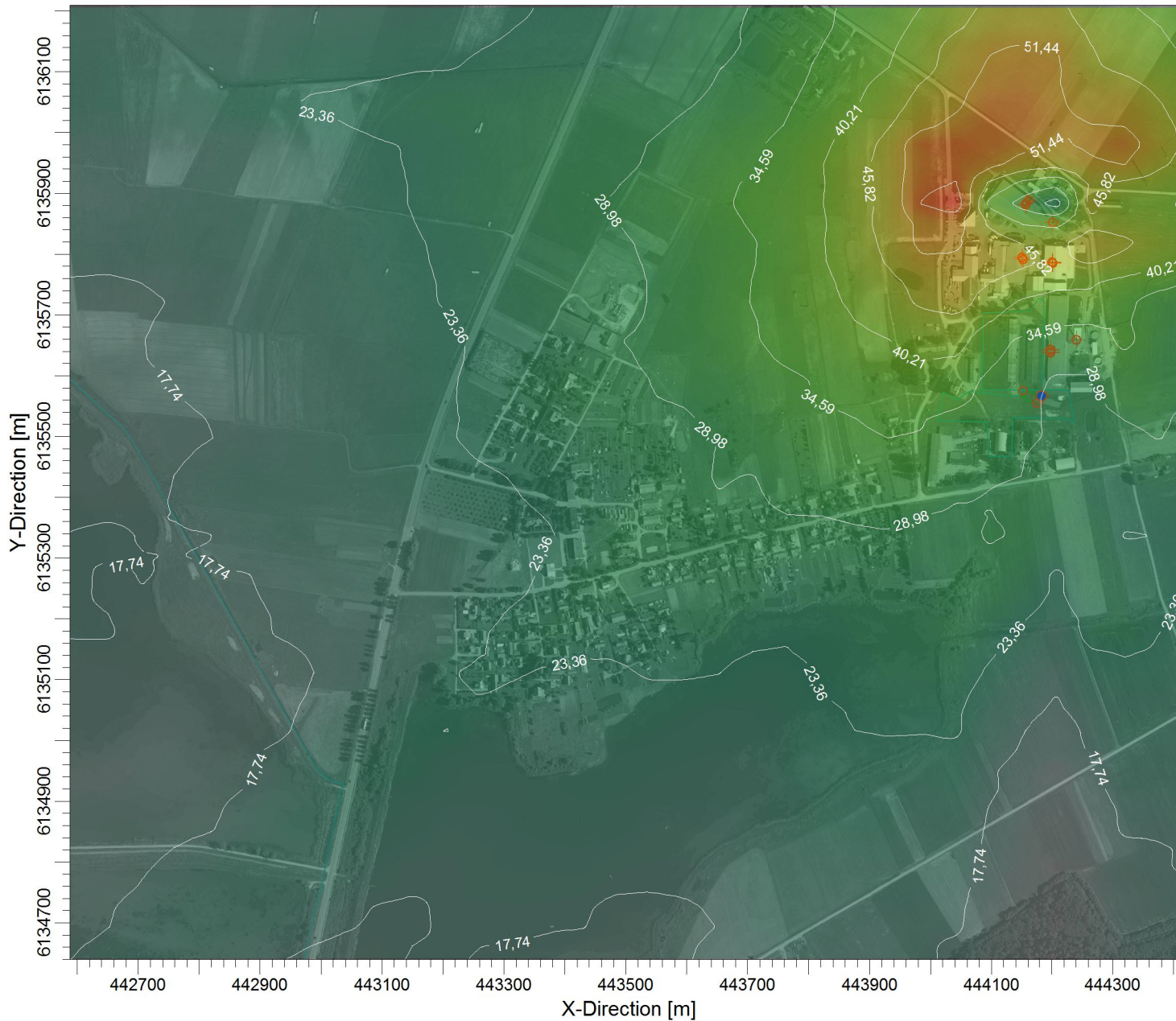
PROJECT TITLE:

Azoto dioksidas (NO₂)

1 valandos vidurkio koncentracijos įvertinus foninę taršą

COMMENTS:

Ribinė vertė - 200 ug/m³



ug/m³

PLOT FILE OF 99.80TH PERCENTILE 1-HR VALUES FOR SOURCE GROUP: ALL
Max: 62,67 [ug/m³] at (444052,84, 6135890,01)



SOURCES:

21

RECEPTORS:

840

OUTPUT TYPE:

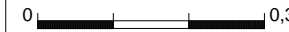
Concentration

MAX:

62,67 ug/m³

SCALE:

1:10.000



PROJECT NO.:

PROJECT TITLE:

**Azoto dioksidas (NO₂)
Metų vidurkio koncentracijos įvertinus foninę taršą**

COMMENTS:

Ribinė vertė - 40 ug/m³



PLOT FILE OF ANNUAL VALUES FOR SOURCE GROUP: ALL

Max: 8,22 [ug/m^3] at (444052,84, 613589,01)

SOURCES:

21

RECEPTORS:

840

OUTPUT TYPE:

Concentration

MAX:

8,22 ug/m^3

SCALE:

1:10.000

0

0,3 km

PROJECT NO.:

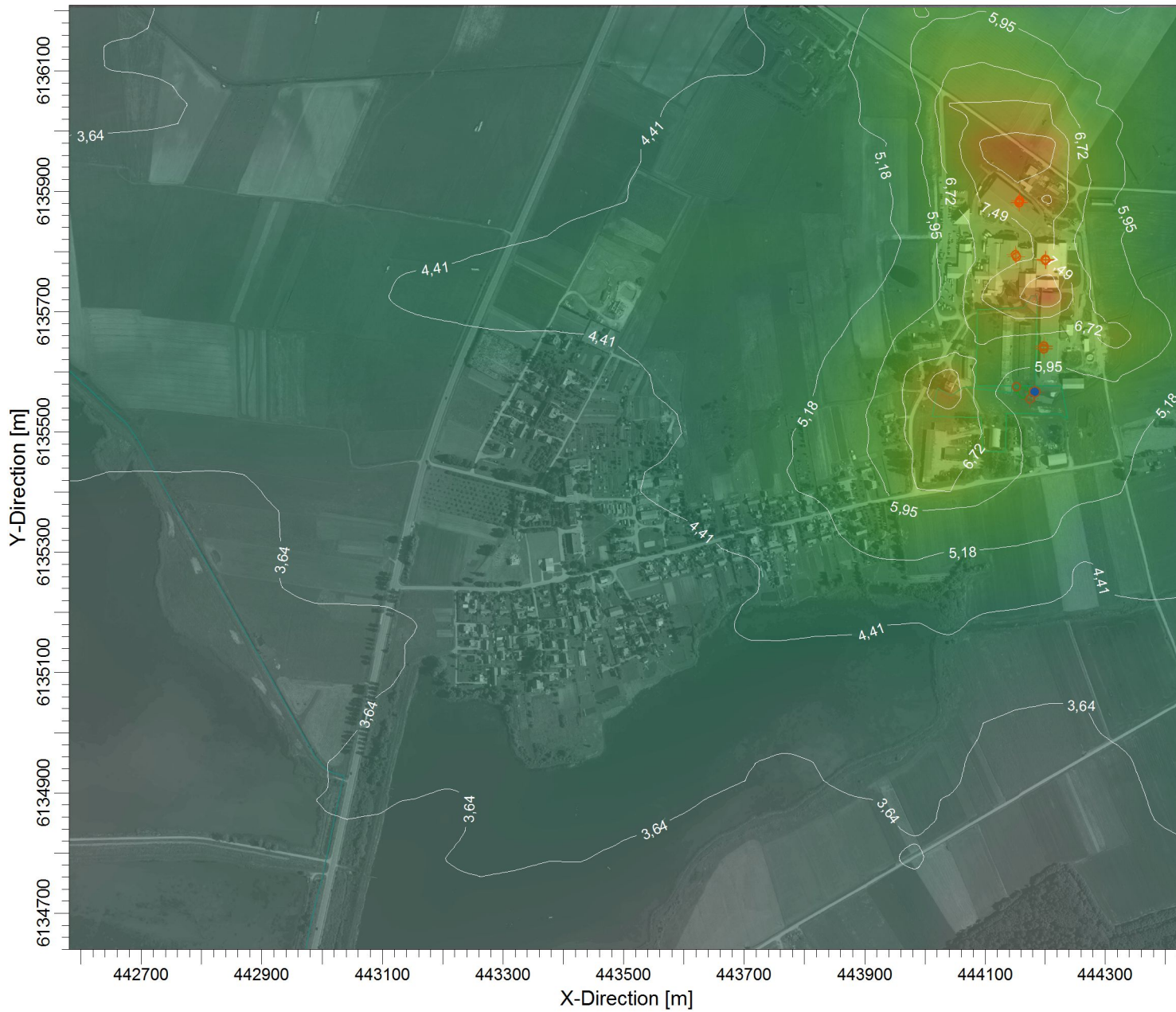
PROJECT TITLE:

Sieros dioksidas (SO2)

Paros vidurkio koncentracijos įvertinus foninę taršą

COMMENTS:

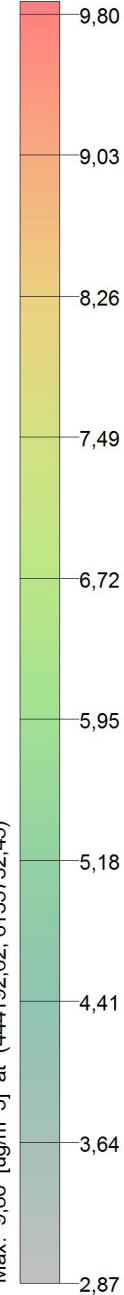
Ribinė vertė - 125 ug/m³



PLOT FILE OF 99,20TH PERCENTILE 24-HR VALUES FOR SOURCE GROUP: ALL

Max: 9,80 [ug/m³] at (444192,62, 6135732,45)

ug/m³



SOURCES:

18

RECEPTORS:

840

OUTPUT TYPE:

Concentration

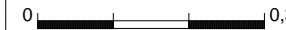
MAX:

9,80 ug/m³

SCALE:

1:10.000

0



0,3 km

PROJECT NO.:

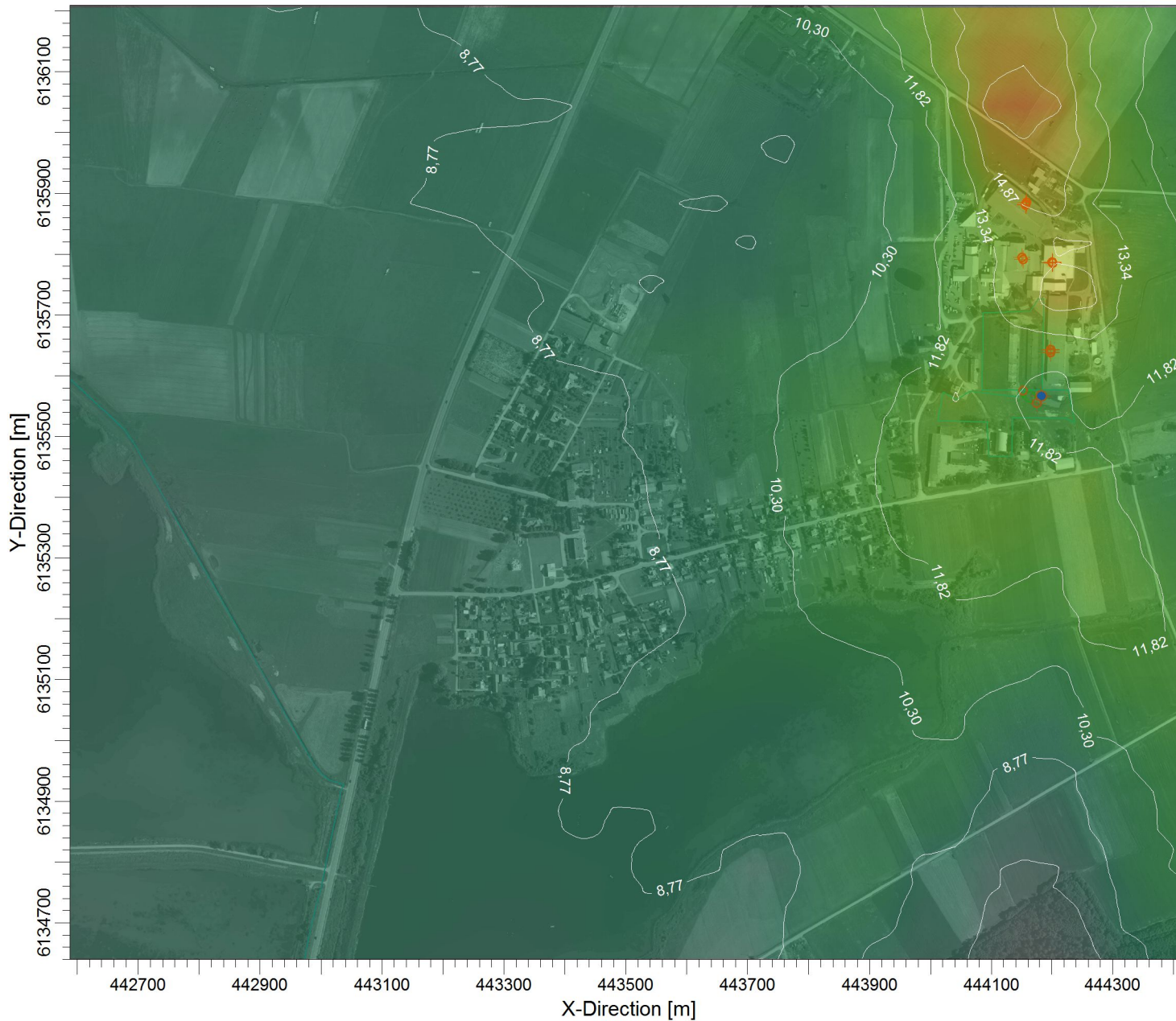
PROJECT TITLE:

Sieros dioksidas (SO2)

1 valandos vidurkio koncentracijos įvertinus foninę taršą

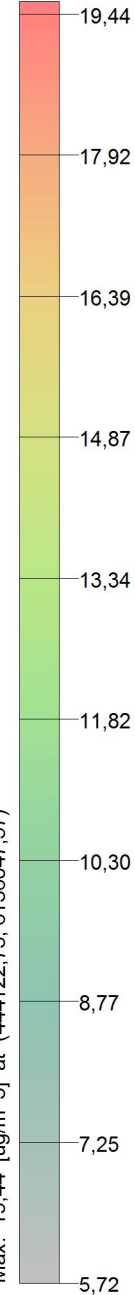
COMMENTS:

Ribinė vertė - 350 ug/m³



ug/m³

PLOT FILE OF 99.70TH PERCENTILE 1-HR VALUES FOR SOURCE GROUP: ALL
Max: 19,44 [ug/m³] at (444122,73, 6136047,57)



SOURCES:

18

RECEPTORS:

840

OUTPUT TYPE:

Concentration

MAX:

19,44 ug/m³

SCALE:

1:10.000



PROJECT NO.: